

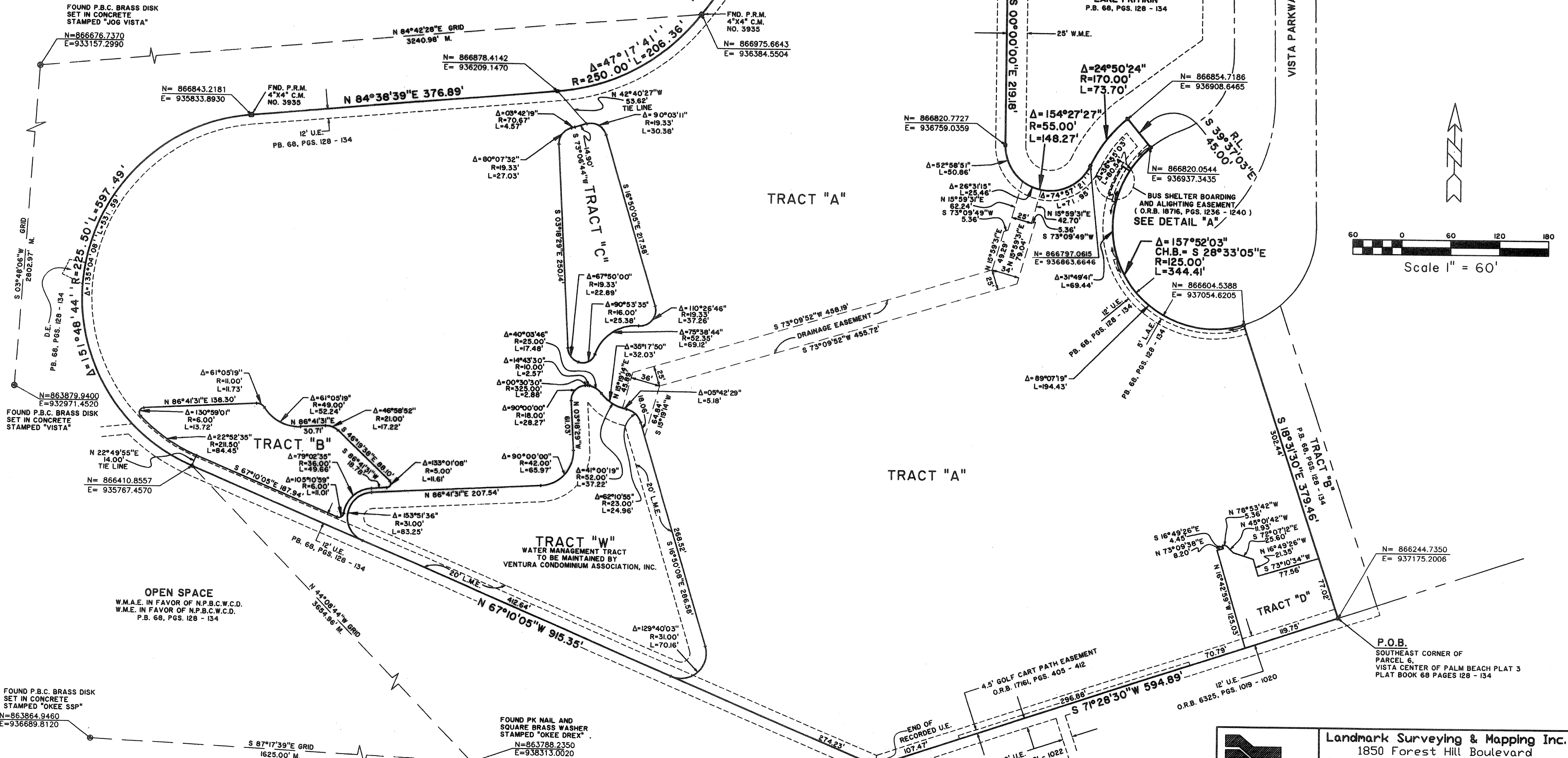
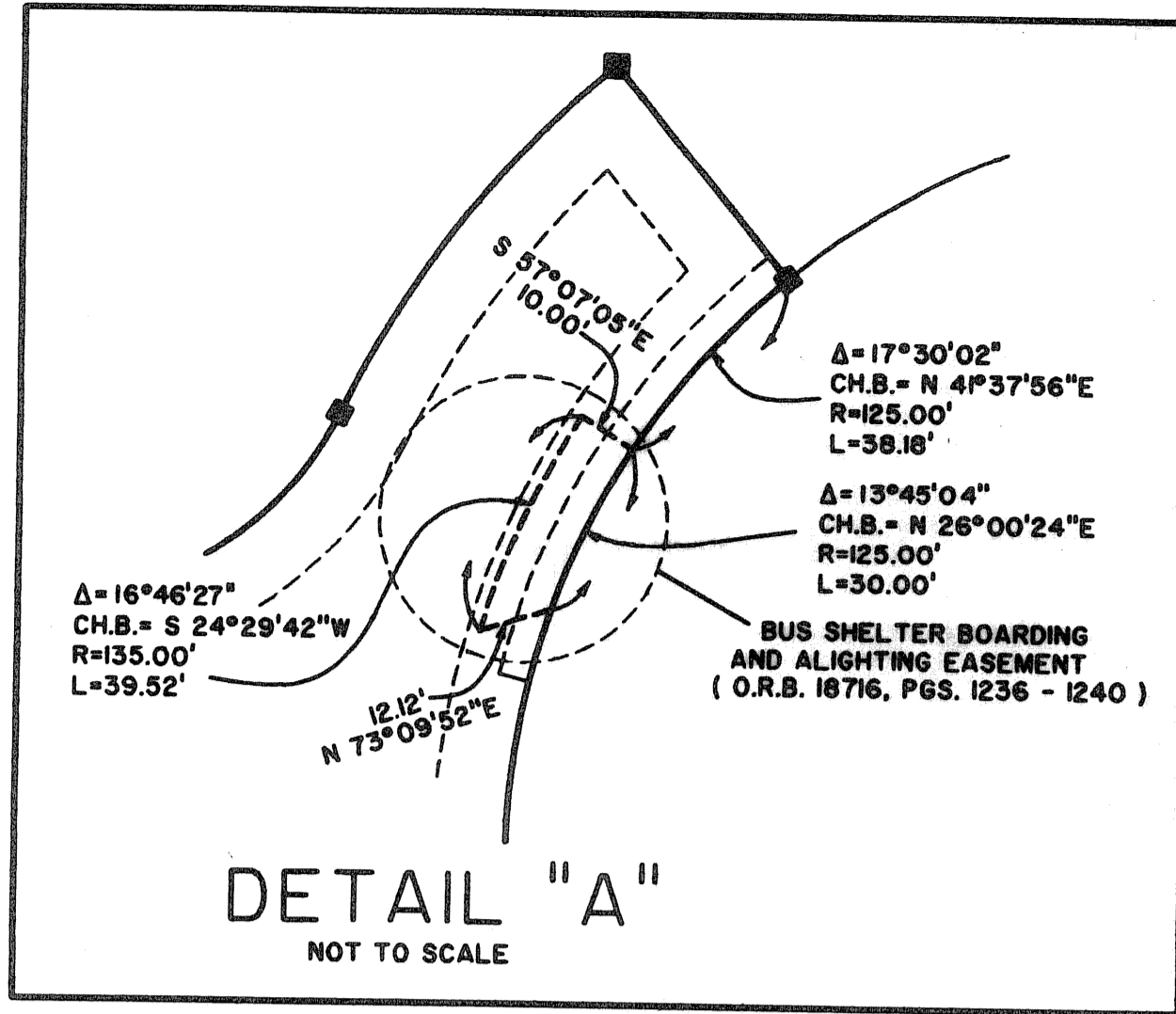
EMERALD DUNES - PARCEL 6

(A PORTION OF A P.I.P.D.)

BEING A REPLAT OF PARCEL 6 AND LAKE II, VISTA CENTER OF PALM BEACH PLAT 3, AS RECORDED IN PLAT BOOK 68, PAGES 128 THROUGH 134, PUBLIC RECORDS OF PALM BEACH COUNTY, FLORIDA AND LYING IN SECTION 22, TOWNSHIP 43 SOUTH RANGE 42 EAST, PALM BEACH COUNTY, FLORIDA.
SHEET 2 OF 2

COORDINATE NOTE:
STATE PLANE COORDINATES SHOWN ARE GRID DATUM, NAD 83 1990 ADJUSTMENT, FLORIDA EAST ZONE, COORDINATE SYSTEM 1983 STATE PLANE, TRANSVERSE MERCATOR PROJECTION
LINEAR UNIT = US SURVEY FEET
ALL DISTANCES ARE GROUND
SCALE FACTOR = 1.0000312
GROUND DISTANCE X SCALE FACTOR = GRID DISTANCE
S 7°28'30"W (PLAT BEARING) -00°00'09" COUNTERCLOCKWISE ROTATION PLAT TO GRID
S 7°28'21"W (GRID BEARING) PLAT TO GRID
THE SOUTH LINE OF TRACT "A"

69



FOUND P.B.C. BRASS DISK SET IN CONCRETE STAMPED "JOG VISTA"
N=866676.7370
E=933157.2990

OPEN SPACE
W.M.A.E. IN FAVOR OF N.P.B.C.W.C.D.
W.M.E. IN FAVOR OF N.P.B.C.W.C.D.
P.B. 68, PGS. 128 - 134

LAKE 8 LAKE PRITIKIN
P.B. 68, PGS. 128 - 134

FOUND P.B.C. BRASS DISK SET IN CONCRETE STAMPED "VISTA"
N=863879.9400
E=932971.4520

N=866410.8557
E=935767.4570

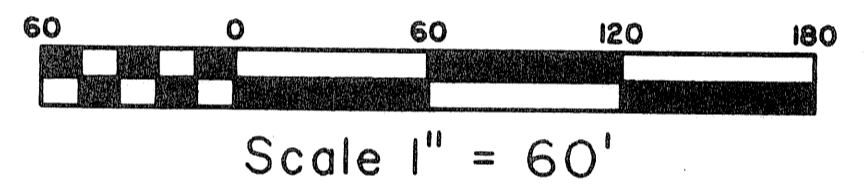
OPEN SPACE
W.M.A.E. IN FAVOR OF N.P.B.C.W.C.D.
W.M.E. IN FAVOR OF N.P.B.C.W.C.D.
P.B. 68, PGS. 128 - 134

FOUND PK NAIL AND SQUARE BRASS WASHER STAMPED "OKEE DREX"
N=863788.2350
E=938313.0020

N=866055.6981
E=936611.1263

OPEN SPACE
W.M.A.E. IN FAVOR OF N.P.B.C.W.C.D.
W.M.E. IN FAVOR OF N.P.B.C.W.C.D.
P.B. 68, PGS. 128 - 134

P.O.B.
SOUTHEAST CORNER OF PARCEL 6, VISTA CENTER OF PALM BEACH PLAT 3 PLAT BOOK 68 PAGES 128 - 134



EMERALD DUNES - PARCEL 6
BOOK 107 PAGE 69
SECTION 22, TOWNSHIP 43 SOUTH
RANGE 42 EAST, PALM BEACH COUNTY, FLORIDA
VISTA CENTER

Landmark Surveying & Mapping Inc.
1850 Forest Hill Boulevard
Ph. (561) 433-5405 Suite 100 W.P.B. Florida
LB # 4396

EMERALD DUNES - PARCEL 6
A PORTION OF A P.I.P.D.